



Disconnected Youth in Tucson, Arizona

Demographic Data 2005-2007 Averages

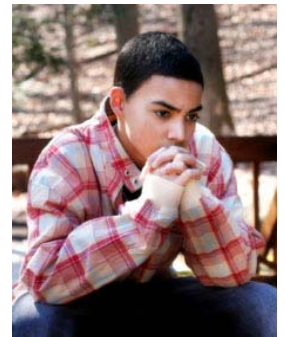
- 74,284 youth ages 16 to 24 or 13.9% of the population reside within Tucson's borders. Of these, 28,547 are 16 to 19 years old and 45,737 are 20 to 24 years old
- 9,987 youth 16 to 24 years old (13.4%) are high school dropouts
- 39,005 youth 16 to 24 years old (55.4%) have a family income level under \$39,000
- 30,976 youth 16 to 19 years old (22%) are unemployed
- 2,225 teen pregnancies were recorded in Tucson for 2006.
Disturbingly for our community, 13% of all children are born to teen mothers, a statistic that is 3% higher than the national average.



Out-of-School, Out-of-Work

Disconnected Youth are those who are neither enrolled in school (high school/college) nor working.

- Youth in families with incomes under \$20,000 are employed at lower rates than middle and upper income peers
- Youth from low income families are least likely to be employed, creating long term unemployment and low earnings
- High school dropouts have a high disconnection rate of 44.7%, meaning they are neither in school or working by age 24.
- 58.3% of high school dropouts have no paid employment
- As children of teen parents grow older, these children are more likely to drop out of school, get into trouble, and end up as teen parents themselves



Observations

Absence of paid employment opportunities for youth will have long-term negative consequences on wages/earnings, meaning lower tax revenues and higher costs to public services such as police and corrections.

For more information regarding how United Way's Youth Development Coalition is working to get more youth *Ready by 21: Ready for College, Work and Life*, please contact **Amanda Kucich**, Director of Youth Development for United Way of Tucson and Southern Arizona.

330 N. Commerce Park Loop, Suite 200
Tucson, AZ 85754
(520) 903-3904
akucich@unitedwaytucson.org