

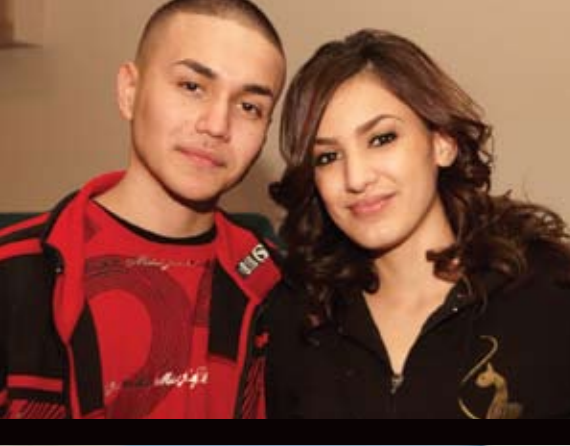
# 2010-2011 COMMUNITY REPORT



YOUTH  
ON  
THEIR OWN™



[yoto.org](http://yoto.org)



## STUDEN PROGRAM REPORT 2010-2011 PROGRAM STATISTICS

### STUDENT CLIENT SNAPSHOT

- **573** student clients were enrolled in the YOTO program
- A total of **60** schools served
- **155** graduates; **92%** graduation rate
- **64%** female students; **36%** male students
- **37%** ages 13 – 17; **63%** ages 18 – 21

### ETHNICITY

- **41%** Hispanic/Latino
- **33%** Caucasian
- **13%** African American
- **8%** Native American
- **4%** Multi-Ethnic/other
- **1%** Asian

### REASONS FOR HOMELESSNESS

- **34%** conflict with step-parent or parent's boyfriend/girlfriend
- **23%** parent chooses not to parent
- **22%** court ordered
- **21%** parental drug abuse

### LIVING SITUATION

- **17%** with relatives
- **19%** with a friend
- **16%** with significant other
- **13%** in a group home
- **6%** other (multiple living situations)
- **4%** alone
- **3%** with a host family
- **1%** transitional housing
- **1%** with a roommate

### PARENTHOOD STATUS

- **20%** of students were pregnant or parenting

### SPECIAL NEEDS

- **66** students received assistance with rental, utility, or medical services
- **249** students received monthly bus passes
- **252** students received basic needs assistance with food or clothing

# HELPING HOMELESS TEENS. INVESTING IN TUCSON'S FUTURE.



## Help us to direct more funds to students!

YOTO has greatly reduced the size and frequency of mailings to you! Today's technology makes it very easy to communicate without paper and postage. Youth On Their Own is in the process of updating our files. Our goal is to have an email address for every friend to YOTO. Please help us to direct more funding to program as we continue to reduce expenses by receiving information like this on-line! Notify Barrett Sulkowski at [bsulkowski@yoto.org](mailto:bsulkowski@yoto.org) with your request and updated email address. Thank you!

## THE HOLIDAYS FOR YOTO STUDENTS...HOLIDAY HOPE 2011!

Holidays should bring happy times with family and friends. Feeling loved and the special magic of the season is not something that most of our YOTO students experience. Homelessness and lack of caring family severely compound the feeling of despair that many of our students feel during the holidays.

Our goal this year is to present every YOTO student with a \$10 gift card to Wal-Mart, Target, Fry's or Safeway. These stores have been selected because they offer numerous locations with accessibility for all students. The gift cards will be enclosed in a holiday card with a handwritten note of encouragement and greetings personalized to the student. The cards will be delivered to each YOTO student before the holidays. PLEASE only \$10 gift cards! The collection deadline is MONDAY, November 21, 2011.

### Here's how you can help:

- Donate gift cards for \$10 each as indicated above.
- Donate a NEW item of any kind that a teen might enjoy.
- Mail (or drop off) to our office and note these are for the Holiday Hope.
- Volunteer to write holiday cards to students and enclose gift cards.
- Volunteer to deliver holiday cards and cookies to YOTO students at their schools.

Contact Jane Stash at [jane.stash@gmail.com](mailto:jane.stash@gmail.com) or 520-400-0337 to sign up!



## SAVE THE DATES!

How you can help make the difference!

- **YOTO Golf Tournament**-on Friday, Dec. 2, 2011, YOTO will host The YOTO Classic- a unique combination format of two-man teams scramble or best ball. Entry fee is \$125 and includes dinner and prizes! Go to [yoto.org](http://yoto.org) for more information and to sign up!

- On Friday, Dec. 9, 2011, YOTO hosts its **Annual YOTO Student Holiday Party!** Help make the difference for 500 YOTO kids by donating a \$10 gift card to Target, Walmart, Frys or Safeway. Each student will receive a \$10 gift card in a personalized card. Mail or drop off to YOTO office at 1443 W. Prince Rd., Tucson, AZ 85705 by Monday, Nov. 21, 2011.

- **DO THIS BY DECEMBER 31, 2011!**

Donate your Arizona State Tax liability to Youth On Their Own! Filing married, donate up to \$400, filing single up to \$200. Don't let your tax dollars leave Tucson- use them here where you can make THE DIFFERENCE to a YOTO student. (Youth on Their Own is an approved entity to receive the AZ Charitable Tax Credit. You may donate to both the school tax credit and the charitable tax credit!) See [YOTO.org](http://YOTO.org) for more information or to make your donation on-line!

- **Join us for the 26th Talk of The Town!**

Youth on Their Own's "Signature" event tradition continues! Friday, March 30, 2012 • Loew's Ventana Resort • 6 P.M. Stay tuned for future updates on the event festivities!

Youth On Their Own supports students in our program through fund raising events, grant writing, donations of time, talents and resources from numerous businesses, churches and individuals like you! Thank you for making the difference for these youth and also our community.

## Student Story – Monique

Monique came from an abusive home environment. As the oldest child of a neglectful mother, Monique was forced to grow up very fast. Her mother basically ignored her children, leaving Monique to not only

look after her two younger siblings but also the added responsibility of all the household work.

When Monique was sixteen years old, her stepfather was released from prison and returned immediately to abusing heavy drugs. Within a week of his release, Monique's stepfather was at home with the kids, high on PCP, and severely beat Monique. The stepfather was again arrested, but immediately bailed out by her mother, who despite seeing her daughter badly beaten took the side of her abusive husband. Monique was removed from the house by child protective services and placed in a group home.

Despite all of the hardships she endured, Monique remained focused and determined to succeed in life. As a member of the National Honor Society since she was a freshman in high school, Monique also excelled as a varsity basketball player. While maintaining her good grades, Monique kept her sights focused on her future. Her high school diploma was the key to a better life.

Monique plans to become a pediatric nurse in order to fulfill her passion of helping young children. She celebrated her high school graduation in 2011 and also earned a 2 year scholarship to Pima Community College. Her success was a result of her hard work, made possible because of the support from donors like you through Youth On Their Own.



## Wish List 2012

- Program support-“adopt” one student for one school year -\$1,250.00
- Adopt 100 students for \$125K
- Adopt 200 students for \$250K
- Provide Special Needs funding for school year- \$30K
- Renovation/expansion of the Student Mini-Mall- \$15K
- Fund the Student Advocate position which supports successful outcomes towards graduation - \$30K



## GET INVOLVED!

Youth On Their Own loves our volunteers! If you are interested in volunteering, we offer many different ways to share your time and talents. From clerical, to office assistance, delivering items to schools, helping with fund raising parties and more! Join our Leadership Council and get involved. There are no time or money requirements. Complete an application on our website for volunteering- we'll contact you or call us.





## HOW CAN YOU HELP?

- Support/ adopt a student with a monthly donation of \$125 for 10 months (school year).
- Contribute donations of non-perishable foods or gift cards for students (Target, Wal-Mart, Fry's, etc.).
- Donate new, unused, full-size (no hotel size) personal hygiene items for men/women (shampoo, toothpaste, razors, etc.) and/or staple foods items (Unexpired, please!) that include: peanut butter, pasta, canned goods, school supplies.  
New clothing only: T-shirts, sweat shirts-long and short sleeve-assorted sizes.
- Direct your Arizona State Tax Charitable Credit liability by 12/31/2011 to YOTO.
- Attend a YOTO Fund Raising event-they are great fun and bring a friend!
- Volunteer your time and talents.

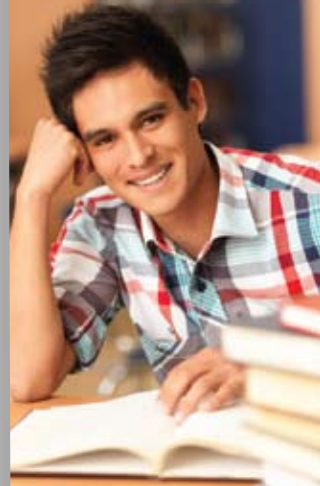
For all of the above, see our website [yoto.org](http://yoto.org) for details or phone us **520.293.1136**.  
**DONATE ON- LINE** or with the enclosed donation envelope. All donations are tax deductible for 2011 made prior to 12/31/2011.

### Student Story – Armando

When he was just a young boy, Armando's father died of a drug overdose. To lose a parent in such a tragic way would be difficult to handle at any age, but for a child it is particularly traumatic. Then at the age of 14, Armando lost his mother to an overdose of pills. His mother's death was particularly hard on him because not only did he lose his only parent, but it also created a rift within the remainder of his family. After his mother's death, Armando and his younger sister were orphaned.

Armando was very depressed during this time and went to therapy in order to cope with his parents' deaths. Despite hardships that would crush most adults, Armando was able to persevere. Armando says, "I will mourn my mother's death forever, but not collapse under the sorrow. I must build on the situation and be the best that I can be at what I do. Living in darkness is not a healthy way to live because it prevents opportunities that could be great. Opportunities are given every day and I have passed too many along".

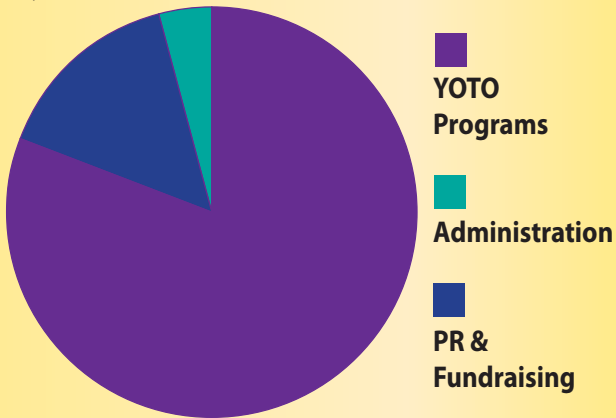
With assistance through Youth On Their Own, Armando has become a strong, motivated young man, graduating from high school in 2011 and earning a full two year Pima Community College scholarship. He plans to study airplane mechanics and is excited about his future which is filled with hope. Armando says, "I feel in order to achieve what one desires most, one would need some assistance, and my assistance has been Youth On Their Own. Youth On Their Own has been a tremendous help and I am in their debt for the aid and support I received from the donors to help make this future possible for me.



Youth On Their Own funding comes from a variety of revenue sources including: individuals, churches, organizations, businesses/civic groups, foundations/grant funding and events.

Fiscal school year ending June 30, 2011, \$236,000 was budgeted for stipend payments to YOTO students. As a result of a larger than anticipated need and a 29% increase in student applications to the program, Youth On Their Own was able to provide \$245,328 in stipend payments to more than 570 eligible applicants.

Effective fund raising and additional generous donations have allowed Youth On Their Own to increase net assets 51% since June 30, 2010.



Teen homelessness and current economic pressures have resulted in requests for greater assistance to more youth. For fiscal year 2011-2012, Youth On Their Own has budgeted \$425,000 for monthly stipend payments, a 73% increase over last year's total.

YOTO works diligently to be fiscally prudent and appreciates the trust placed in our organization when you support our mission and homeless youth. We allocate 81 cents of each donated dollar toward the YOTO Program (stipend and special needs distribution). Thank you, generous donors for helping to make THE difference for these young people and our community!





**YOUTH ON THEIR OWN**

1443 West Prince Road

Tucson, Arizona 85705

[YOTO.ORG](http://YOTO.ORG)

### **BOARD OF DIRECTORS- 2011-2012**

Deana Smith- President

Terry Hlivko-President-Elect

Michael Laatsch-Treasurer

Erin Fitzgerald-Secretary

Dr. Thomas Eyler

Dr. Bryan Foulk

Sean Murray

Leslie Turner

Mary Stewart

Stan Steinman

Lorraine McPherson

Ross Sheard

Kathy Kang

Kara Festa

Eric Ufondu

Marian Conrad LaLonde

### **ADMINISTRATIVE STAFF**

Teresa L. Baker-Executive Director

Matthew C. Yotter- Development Director

Jayne Song-Gin-Program Director

Sandy Stoll- Finance/Operations Manager

Emily Furrier-Student Advocate

Jesse Washburn-Student Advocate

Evelyn Verluis-Administrative Assistant

Daphne Soules-Administrative Assistant

Barrett Sulkowski-Administrative Assistant

NON-PROFIT ORG

US POSTAGE

**PAID**

TUCSON, AZ

PERMIT NO. 471

### **MISSION:**

Youth On Their Own supports the high school graduation and continued success of homeless youth by providing financial assistance, basic human needs and guidance.

Design and graphics donated by

JENNIFER O'CONNOR GRAPHIC DESIGN



**Financial Insert for 2010-2011 Community Report**

For the fiscal year ending 6/30/2010:

Total Income	Fundraising Events	Gov't Grants	Contributions, Gifts, and Other Grants	Other Income
\$625,008.00	\$40,322.00	\$88,212.00	\$495,732.00	\$742.00

Total Functional Expenses	Fundraising Events	Program Services	Management & General Expenses
\$673,502.00	\$52,942.00	\$482,833.00	\$137,727.00

Total Program Expenses           \$482,833.00

Net Assets as of 6/30/10           \$566,140.00

For the fiscal year ending 6/30/2011:

Total Income	Fundraising Events	Gov't Grants	Contributions, Gifts, and Other Grants	Student Events, Misc. Income
\$897,308.00	\$104,085.00	\$80,679.00	\$706,931.00	\$5,613.00

Total Functional Expenses	Fundraising Events	Program Services	Management & General Expenses
\$629,121.00	\$45,344.00	\$480,960.00	\$102,817.00

Total Program Expenses           \$480,960.00

Net Assets as of 6/30/11           \$834,327.00